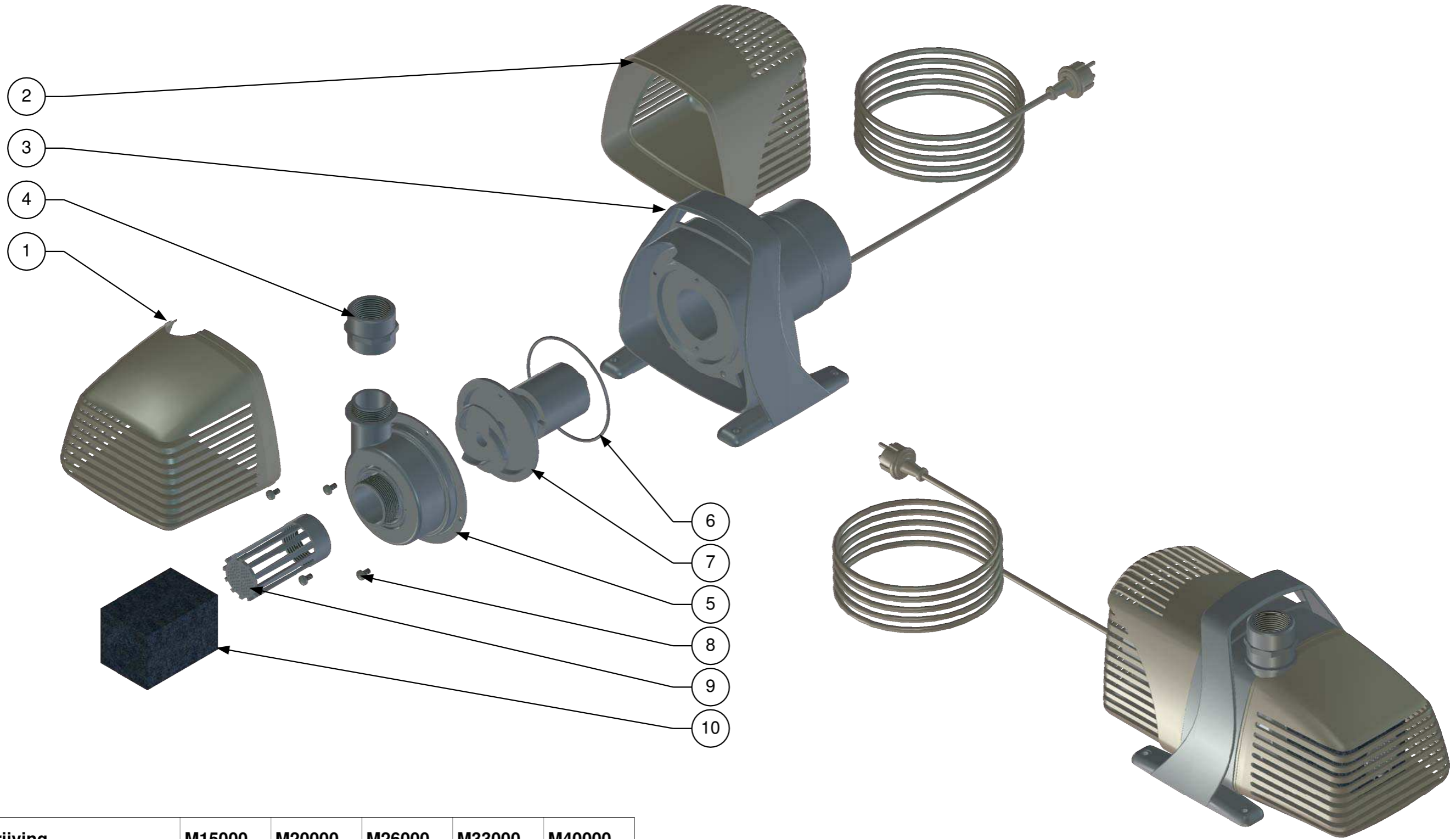
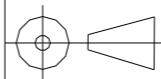


A  
B  
C  
D  
E

A  
B  
C  
D  
E



| NR. | Omschrijving               | M15000 | M20000 | M26000 | M33000 | M40000 |
|-----|----------------------------|--------|--------|--------|--------|--------|
| 1   | Filterhuis voorzijde       | M1950  | M1950  | M1950  | M1950  | M1958  |
| 2   | Filterhuis achterzijde     | M1951  | M1951  | M1951  | M1951  | M1951  |
| 3   | Handgreep/voet             | M3710  | M3710  | M3710  | M3710  | M3712  |
| 4   | SOK bi.dr PP               | 901050 | 901050 | 901050 | 901050 | 901051 |
| 5   | Pomphuis                   | M1370  | M1370  | M1370  | M1370  | M1382  |
| 6   | O-ring 132x3.5             | M2317  | M2317  | M2317  | M2317  | M2317  |
| 7   | Loopeenheid compl          | M2213  | M2214  | M2215  | M2217  | M2217  |
| 8   | Schroef M6x12 DIN 7045 4.8 | ME0048 | ME0048 | ME0048 | ME0048 | ME0048 |
| 9   | Filterkorf                 | M1949  | M1949  | M1949  | M1949  | M1949  |
| 10  | Filterspons                | Optie  | Optie  | Optie  | Optie  | Optie  |

|  |                        |  |                                     |  |
|--|------------------------|--|-------------------------------------|--|
| <br>Opdrachtgever | <b>A3</b><br>Scale 1:5 | General Tolerances acc to :<br>ISO 2768-1 medium | Title<br>Vijverpompen Multysystem M |  |
|  |                        | Art.nr.<br>0                                     | Doc.nr. Vijverpompen Multysystem M  | Sheet nr.<br>1   |
|  |                        | Drawn J.W.    Checked Checked    Dat. 18-07-2008 |                                     | <b>Meßner Benelux</b><br><b>Winkelskamp 13</b><br><b>7255 PZ Hengelo Gld</b> |