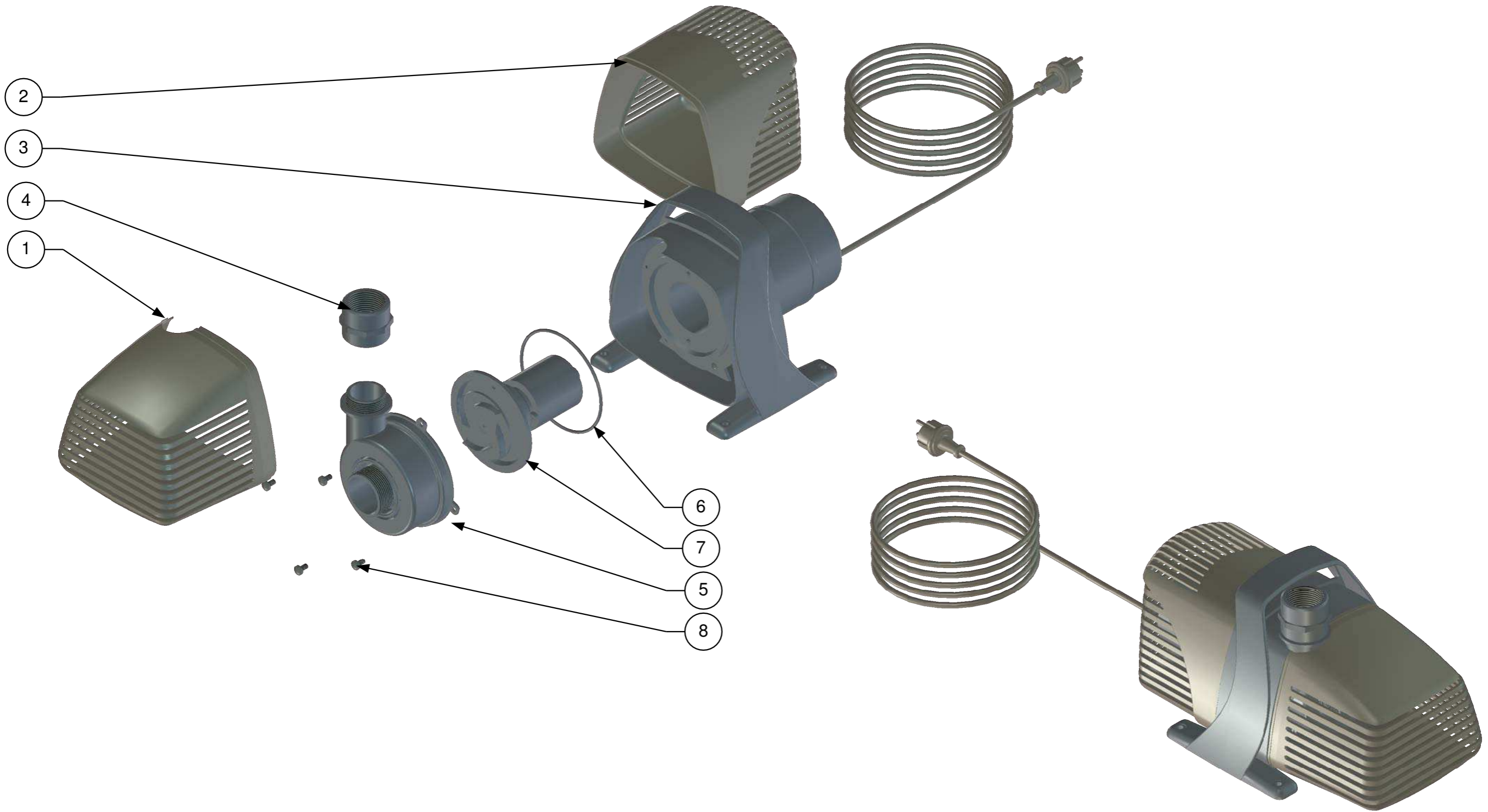
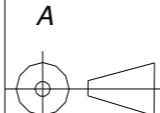


A  
B  
C  
D  
E

A  
B  
C  
D  
E



NR.	Omschrijving	MPF3000	MPF4500	MPF6000	MPF8000	MPF10000	MPF13000
1	Filterhuis voorzijde	ME9095	ME9095	ME9095	ME9095	ME9095	ME9095
2	Filterhuis achterzijde	ME9096	ME9096	ME9096	ME9096	ME9096	ME9096
3	Handgreep/voet	ME9097	ME9097	ME9097	ME9097	ME9097	ME9097
4	SOK bi.dr PP	901035	901035	901035	901035	901035	901049
5	Pomphuis	ME9098	ME9098	ME9098	ME9098	ME9099	ME9100
6	O-ring 132x3.5	ME0030	ME0030	ME0030	ME0030	ME0030	ME0030
7	Loopeenheid compl	ME9101	ME9101	ME9101	ME9102	ME9103	ME9104
8	Schroef M6x12 DIN 7045 4.8	ME0055	ME0055	ME0055	ME0055	ME0055	ME0055

 Opdrachtgever	<b>A3</b> Scale 1:5	General Tolerances acc to : ISO 2768-1 medium	Title <b>Vijverpompen Multysystem MPF</b>	
	Art.nr. 0	Drawn J.W.	Checked Checked	Dat. 18-07-2008
Doc.nr. <b>Vijverpompen Multysystem MPF</b>		Sheet nr. 1	Rev.nr. 0	<b>Meßner Benelux</b> <b>Winkelskamp 13</b> <b>7255 PZ Hengelo Gld</b>